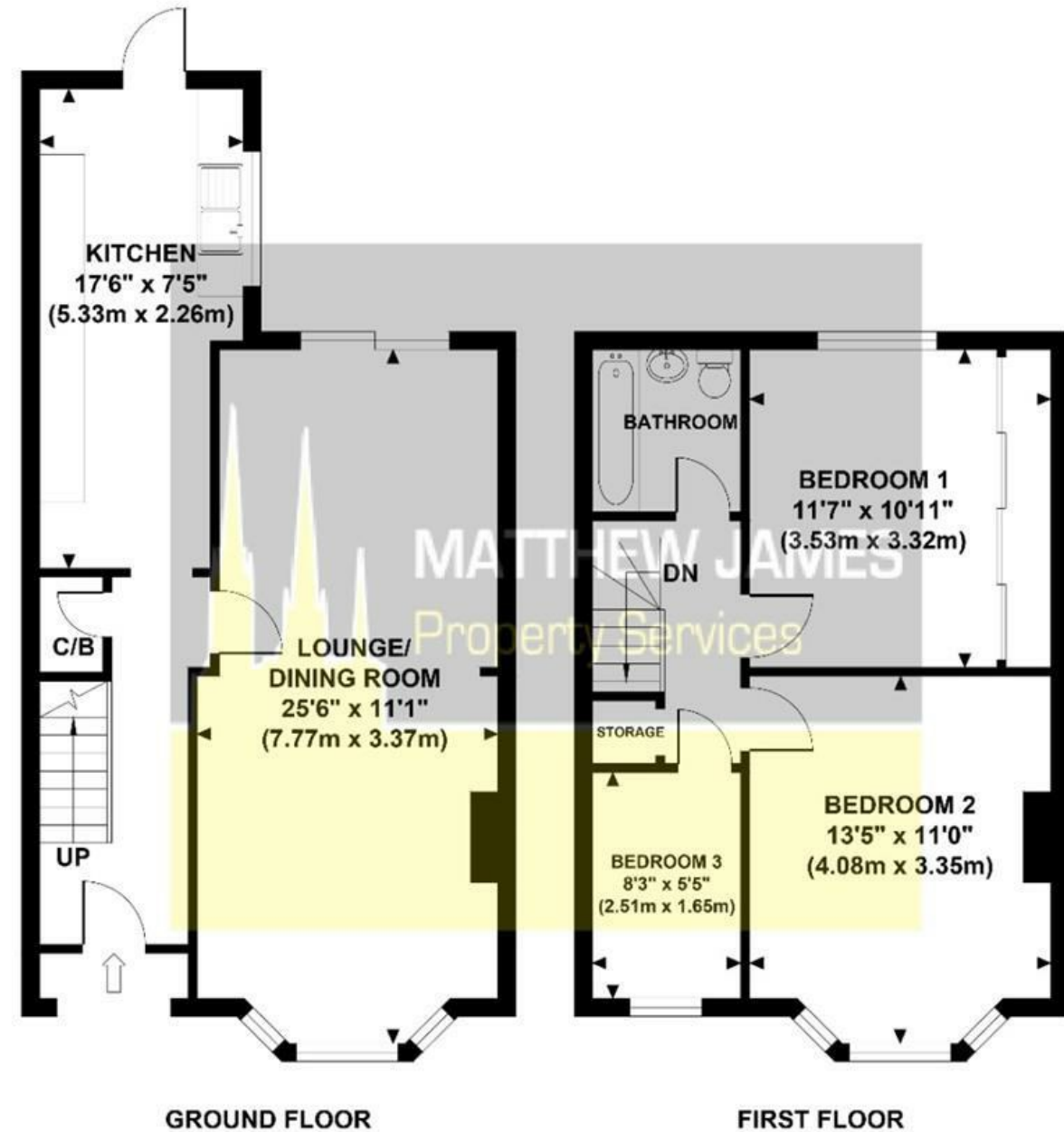


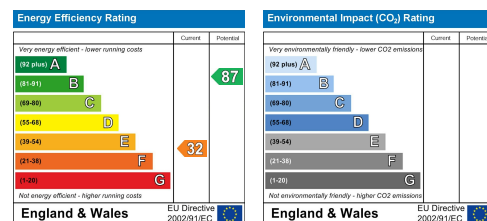
# WYCLIFFE ROAD WEST

Approximate Gross Internal Area  
882 sq ft / 81.90 sq m



Although every attempt has been made to ensure accuracy, all measurements are approximate and no responsibility is taken for any error, omission, or mid-statement. This floor plan is for illustrative purposes only and not to scale. Measured in accordance to RICS standards.

These particulars, whilst believed to be accurate are set out as a general outline only for guidance and do not constitute any part of an offer or contract. Intending purchasers should not rely on them as statements of representation of fact, but must satisfy themselves by inspection or otherwise as to their accuracy. No person in this firm's employment has the authority to make or give any representation or warranty in respect of the property.



## 60 Wycliffe Road West

Wyken, Coventry CV2 3DZ

THREE BEDROOMS... END OF TERRACE... VACANT... NO UPWARD CHAIN... ELECTRIC STORAGE HEATING... IN NEED OF MODERISATION IN PLACES... GREAT LOCATION... PERFECT FOR FIRST TIME BUYER OR INVESTOR. Located in the heart of Wyken in Coventry, this larger than average property needs to be viewed to appreciate what is being offered for sale. Briefly comprising of entrance hallway, through lounge dining room, galley kitchen, three bedrooms and a family bathroom with shower over bath to the first floor. Located near plenty of local shops, eateries, public house, main bus routes and is easily commutable to the Coventry University Hospital. For those that commute, the Motorway network is just a short drive away! Sound like it can be your next new home? Call us now to book your viewing!

Offers Over £185,000

### CONTACT INFORMATION

24a Warwick Row, Coventry CV1 1EY

02477 170170

info@matthewjames.uk.com

www.matthewjames.uk.com

Facebook

Twitter

# 60 Wycliffe Road West

Wyken, Coventry CV2 3DZ



- Three Bedrooms
- VACANT
- Through Lounge Dining Room
- End Of Terrace
- PVCu Double Glazed
- Great Starter Home
- NO UPWARD CHAIN
- Electric Storage Heater Heating
- In Need Of Some Decoration In Places

## Front Garden

## Entrance Hallway

## Lounge Dining Room

25'6 x 11'1 (7.77m x 3.38m)

## Kitchen

17'7 x 7'5 (5.36m x 2.26m)

## First Floor Landing

## Bedroom One

13'5 x 11' (4.09m x 3.35m)

## Bedroom Two

11'7 x 10'11 (3.53m x 3.33m)

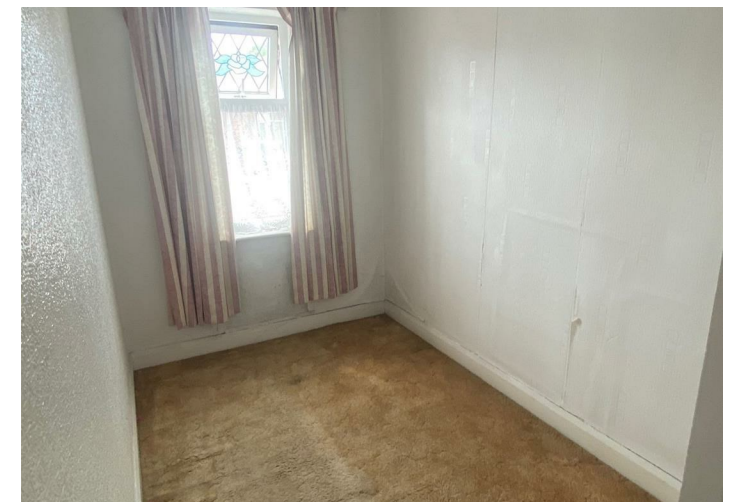
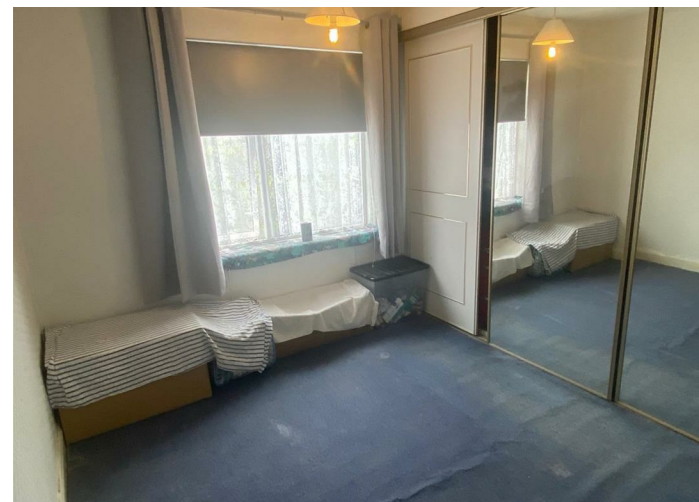
## Bedroom Three

8'3 x 5'5 (2.51m x 1.65m)

## Family Bathroom

5'11 x 5'5 (1.80m x 1.65m)

## Rear Garden



## Directions

